

Coastal Mississippi Alphabet

written by Rebecca M. Giles

Electronic Scavenger Hunt

Directions: In the book *Coastal Mississippi Alphabet*, readers are introduced to the people, places, and events unique to the area of Mississippi from Bay St. Louis to Pascagoula. Using the Internet to obtain information on all kinds of topics can be fun, as well as educational. Learn more about the state of Mississippi by exploring the websites provided to complete each of the tasks below.

1. View “On the World Map” to recognize representations of Mississippi on a map (MS CCRS for the Social Studies G.4.3).



[mississippi-location-on-the-us-map.jpg \(2000x1906\) \(ontheworldmap.com\)](http://ontheworldmap.com/us/state/mississippi/mississippi-location-on-the-us-map.jpg)

- Locate Mississippi on the United States map.
- List the four states bordering Mississippi.
- Circle the two states listed that, like Mississippi, have a shoreline on the Gulf of Mexico.

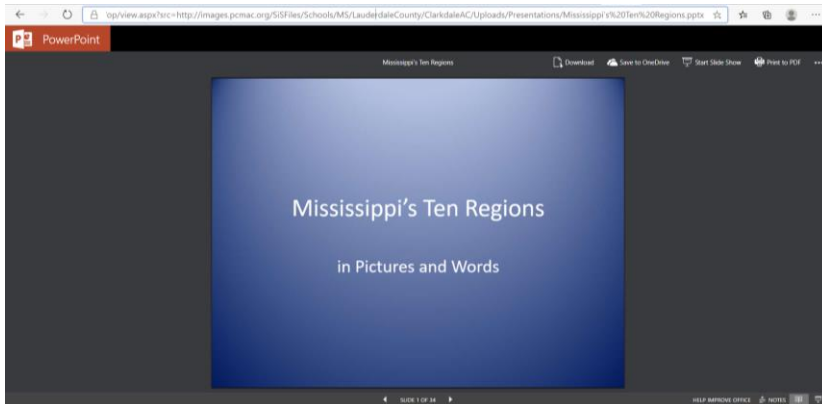
1)

2)

3)

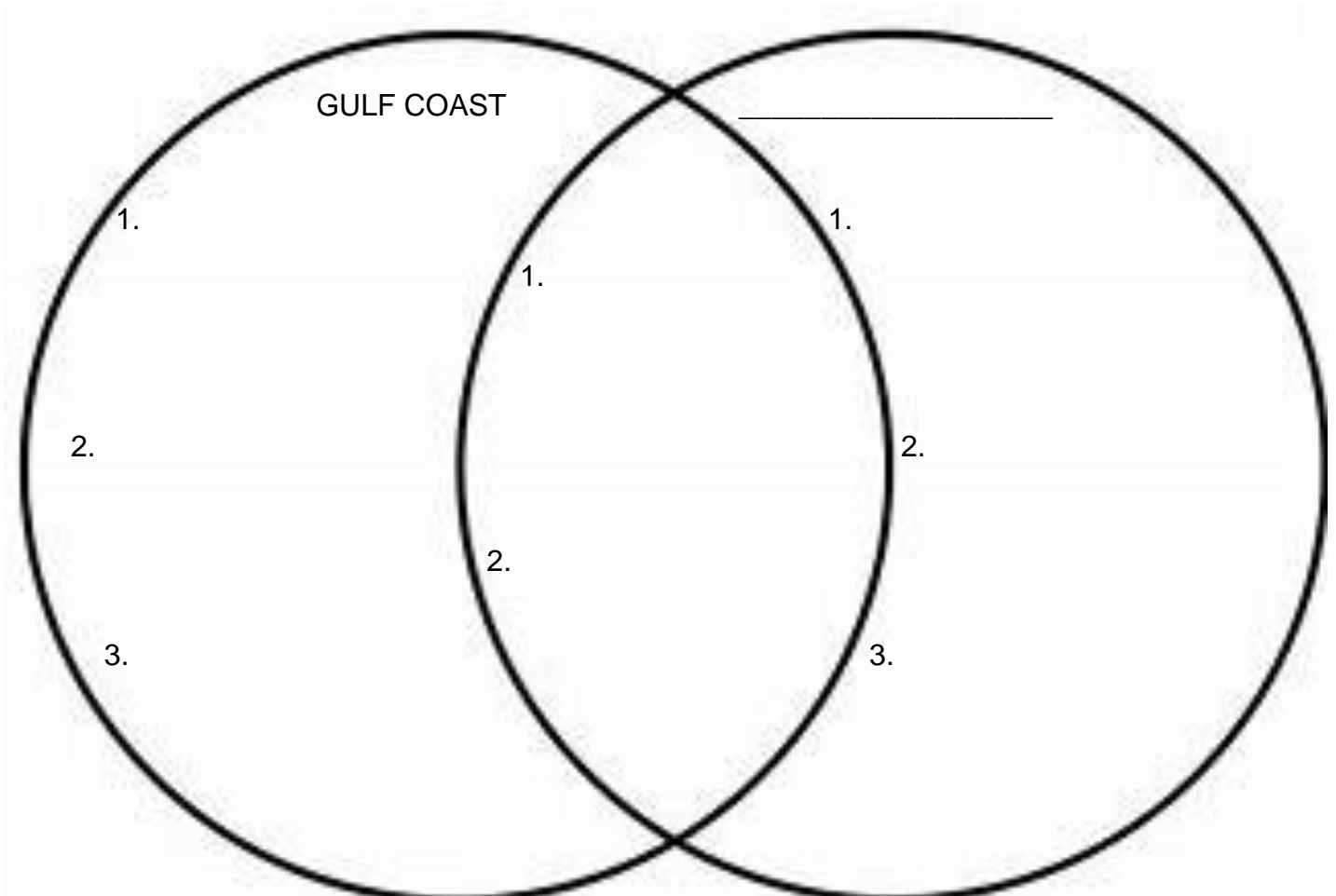
4)

2. *Coastal Mississippi Alphabet* features the state's Gulf Coast region. View the PowerPoint "Mississippi's Ten Regions in Pictures and Words" to describe the physical geography of Mississippi (MS CCRS for the Social Studies G.4.1).



[Mississippi's Ten Regions.pptx \(live.com\)](http://images.pcmac.org/537file/Schools/MS/LauderdaleCounty/Curriculum/Uploads/Presentations/Mississippi%20Ten%20Regions.pptx)

- View the entire PowerPoint presentation (34 slides).
- Choose one region other than the Gulf Coast.
- Complete the Venn diagram to compare and contrast the Gulf Coast with the region you selected by providing 3 differences and 2 similarities.



3. Page 11 of *Coastal Mississippi Alphabet* mentions the Biloxi and Pascagoula tribes. Use the interactive map provided by the non-profit organization Native Languages of the Americas to identify the location of major tribes within Mississippi (MS CCRS for the Social Studies H.4.6).

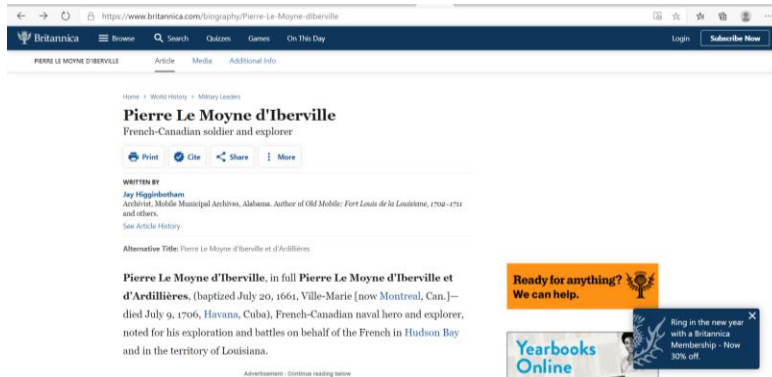


[Maps of Native American Tribes and Reservations in the United States \(native-languages.org\)](http://native-languages.org)

- Click on Mississippi.
- Note where the Biloxi, Chickasaw, Choctaw, Houma, Natchez, Ofo, Quapaw, and Tunica tribes once inhabited the area now known as Mississippi.
- Indicate the location of at least three tribes on the outline of Mississippi provided.

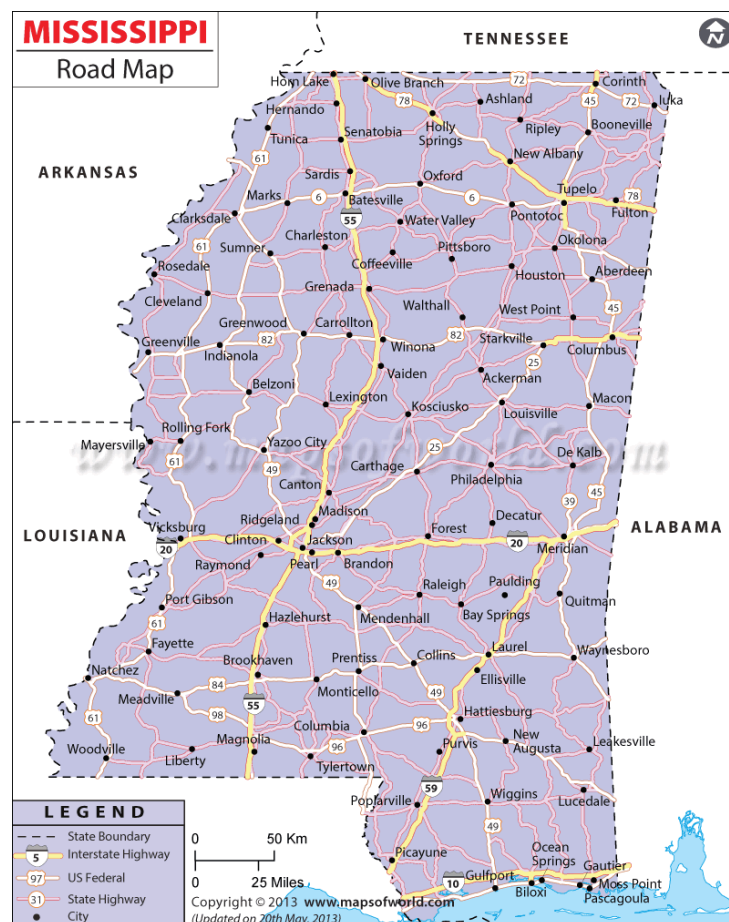


4. Page 11 of *Coastal Mississippi Alphabet* shows the landing of French explorer Pierre Le Moyne d'Iberville and his brother Jean Baptiste de Bienville in what is now Mississippi. Visit the Britannica bibliographic entry for d'Iberville, to learn the location of the early European settlement of Fort de Maurepas (MS CCRS for the Social Studies H.4.2)



<https://www.britannica.com/biography/Pierre-Le-Moyne-dIberville>

- Read the biographic entry for d'Iberville.
- Note the present-day location of the temporary fort (Fort Maurepas) established by d'Iberville in 1699.
- On the map below, put a star on the city where Fort Maurepas was located.



5. Page 15 of *Coastal Mississippi Alphabet* introduces Jefferson Davis, who was elected president of the Confederate States of America on November 6, 1861. To learn more about Mississippi's role in the Civil War (MS CCRS for the Social Studies E.4.1), visit The Mississippi History Timeline.



<https://www.mdah.ms.gov/timeline/>

- Click on the era 1833-1865 Rise and Fall: Cotton Kingdom and the Civil War.
- Explore entries to identify:
 - three events that led to the secession of Mississippi from the Union in 1861 and
 - five military leaders from Mississippi during the Civil War.
- Complete the chart below.

	DATE	EVENT
1.		
2.		
3.		
	RANK	NAME
1.		
2.		
3.		
4.		
5.		

6. Two Mississippi artists - George Ohr (page 12) and Walter Anderson (page 28) - are featured in *Coastal Mississippi Alphabet*. Go to the online version of *The Mississippi Encyclopedia* to better understand how the arts, music, and literature distinguish Mississippi from other places (MS CCRS for the Social Studies H.4.4)



[Mississippi Encyclopedia Online](https://mississippiencyclopedia.org)

- Click the “Categories” tab at the top of the page.
- Search entries under Art, Fiction, Poetry and/or Music to learn about other Mississippians known for their artwork, music, or literature.
- Choose one artist, musician, or author, and complete the graphic organizer below.

NAME: _____

DATE OF BIRTH: _____

PLACE OF BIRTH: _____

DATE OF DEATH: _____

FAMOUS FOR...

FACT 1:

FACT 2:

FACT 3:

7. Hurricanes appear in *Coastal Mississippi Alphabet* on page 13. Visit Fox News to learn how geographic and environmental factors influence life and work (MS CCRS for the Social Studies E 4.2 and G.4.2).



[FOX Facts: Hurricane Katrina Damage | Fox News](#)

- Read the story “FOX Facts: Hurricane Katrina Damage.”
- Describe two ways that Hurricane Katrina, the most destructive natural disaster in U.S. history, negatively impacted Mississippi’s economy.

1.

2.